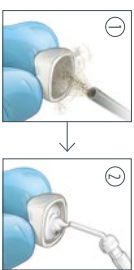


Maxcem Elite™ Chroma Universal Resin Cement

Technique Card

I. Restoration Preparation

Lithium Disilicate/Porcelain 30 PSI



Hydrofluoric etchant
002030

Metal/Zirconia 60 PSI
Composite 15 PSI



II. Adhesive Preparation*

Unidose™

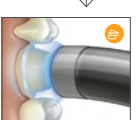
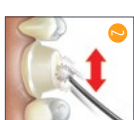


Bottle



*Optional

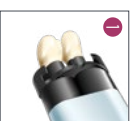
IIIa. Adhesive Application*



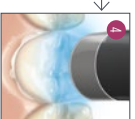
Dent™ Plus
Dent™ Ultra — 00:00:05

*Optional

IIIb. Indirect Restoration Cementation Procedure (Excluding Veneers)



Maxcem Elite
Chroma



Self-cure
Maxcem Elite Chroma
Tack-cure
Dent™ Plus
Dent™ Ultra — 00:00:02



IV. Cementation of Veneers



gel etchant
00:00:15

00:00:10

00:00:05

Unidose™
Bottle

00:00:20
Unidose™
Universal

00:00:05

Dent™ Plus
00:00:05



Maxcem Elite
Chroma

Tack-cure
Dent™ Plus
Dent™ Ultra — 00:00:02

Dent™ Plus
Dent™ Ultra — 00:00:10

Dent™ Plus
Dent™ Ultra — 00:00:10